

CENTURY®

1130 & 1140 Rotators

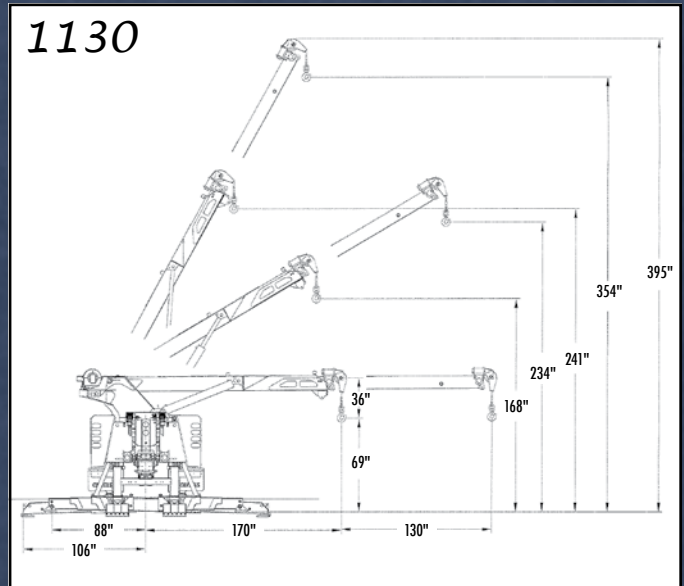


Optional Equipment Shown.

The Century 1130 30-ton and 1140 40-ton rotators are both designed to be versatile yet weight-conscious units for towing and recovery. The 1130 unit features dual 25,000-lb. planetary two-speed winches and a fabricated two-stage recovery boom. The 1140 unit employs dual 35,000-lb. planetary two-speed winches and a choice of a fabricated two- or three-stage recovery boom. Finally, both 1130 and 1140 units provide the operator with 360 degrees of boom rotation (190 degrees in each direction) and include an LDU underlift that provides 15,000 lbs. of lift capacity at 136" of extension and that operates independently of the recovery boom.

**The Ultimate Front Line Rotators Capable of
Handling both Your Recovery and Towing Needs**

1130



The 30-ton 1130 Rotator comes in several configurations: the 156" and 180" tandem-axle model, and the 180" CB aluminum modular body tri-axle version. All 1130 models are equipped with dual 25,000-lb. planetary two-speed winches and a fabricated two-stage recovery boom with 190 degrees of rotation in each direction. Other standard features include new chrome double-action latches, spacious storage compartments, eight-function wireless controls and more.

CENTURY



The new Century RXP option for the 1130 and 1140 tri-axle rotators incorporates dual 35,000-lb., two-speed planetary winches, as well as 212" of spread for more stability when lifting. The RXP also provides additional front-axle weight for towing heavier loads and gives operators countless rigging possibilities for those difficult recoveries, thanks to the two additional winches.



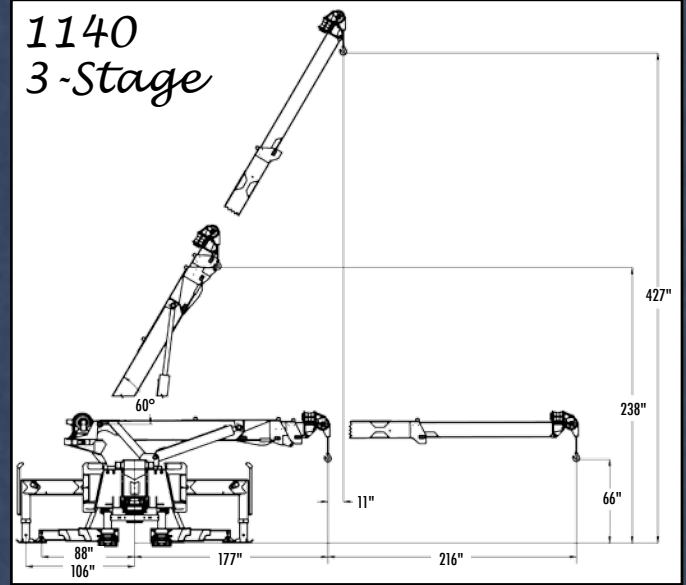
Century's aluminum body is designed to optimize space for your lift forks and popular towing and recovery equipment. Optional front tunnel saddle boxes are available in a variety of sizes to meet your specific equipment needs. All Century bodies come with an aluminum tread-plate walkway for easy access to the center section of the recovery unit.



The rear outriggers on the Century Rotators were redesigned with a 2 1/2° angle and are now fitted with new lighter-weight spade attachments that are easily stored on the rear legs. The user-friendly spade attachments are secured with a pin that can be quickly and easily removed so the attachments simply flip down into spade position. Also shown are optional additional tailboard D-Rings and aluminum dress-up kit.

friendly spade attachments are secured with a pin that can be quickly and easily removed so the attachments simply flip down into spade position. Also shown are optional additional tailboard D-Rings and aluminum dress-up kit.

1140



The popular Century 1140 40-ton Rotator includes many of the features found in Century's larger 60- and 75-ton models but in a lighter-weight package. Designed for versatility in both towing and recovery, the 1140 is outfitted with dual 35,000-lb. planetary two-speed winches and a fabricated two- or three-stage recovery boom with 190 degrees of rotation in each direction. Like the 1130, the 1140 can be had as a 156" or 180" tandem-axle model, or as a 180" CB aluminum modular body tri-axle unit.

CENTURY®



Pictured here are the Optional Radio Proportional Illuminated Controls with Dual Manual Controls for Boom Functions. The backlit controls offer better visibility in low light environments. The wireless proportional remote control allows the operator to move around the recovery scene while simultaneously operating the boom and winch functions.



The LDU is standard on both the 1130 and 1140, and provides 136" of reach with a lift capacity of 15,000 lbs. when fully extended. Fully retracted, the LDU has a reach of 51" and a lift capacity of 35,000 lbs.

Dual 15,000-lb. turret-mounted winches are optional on the Century 1140 Rotator and come with additional sheave heads mounted on the side of the outer boom, two 175' lengths of 1/2" wire rope and two 5-ton alloy swivel hooks.

RECOVERY BOOM SPECIFICATIONS

Maximum Angle.....	60°
Boom Rotation (From Stowed Position).....	190° CW & CCW
1130	
Retracted	60,000 lbs.
Extended.....	25,000 lbs.
Maximum Hook Height	354"
Boom Extension	130"

1140 2-Stage

Retracted	80,000 lbs.
Extended.....	32,000 lbs.
Maximum Hook Height	360"
Boom Extension	144"

1140 3-Stage

Retracted	80,000 lbs.
Extended.....	20,000 lbs.
Maximum Hook Height	427"
Boom Extension	216"

WINCH RATING & CABLE

1130

Rating (first layer of drum) each Winch	25,000 lbs.
Diameter and Length (each winch).....	5/8" x 200'
Type.....	.6 x 37 IWRC

1140

Rating (first layer of drum) each Winch.....	35,000 lbs.
Diameter and Length (each winch)	3/4" x 200'
Type6 x 37 IWRC

STANDARD BODY FEATURES

- 156" or 180" C.B. Aluminum Modular Body
- Large Compartments
- Compartments Over the Wheel Well
- Choice of Chrome Double Action Latches or Push to Open/Push to Close Latches
- Keyless Lock/Unlock Tool Compartments
- LED Federal #108 Lighting
- LED Toolbox Lighting
- Rubber Fenderettes & Mud Flaps
- Chain Rack & Fork Holders
- Rubber Isolators
- Enclosed Inner Wheel Wells
- Rigid Torsional Resistant Mounting Frame
- Tailboard Mounted D-Rings (1 Pair)
- Two Rear Outrigger Spade Attachments

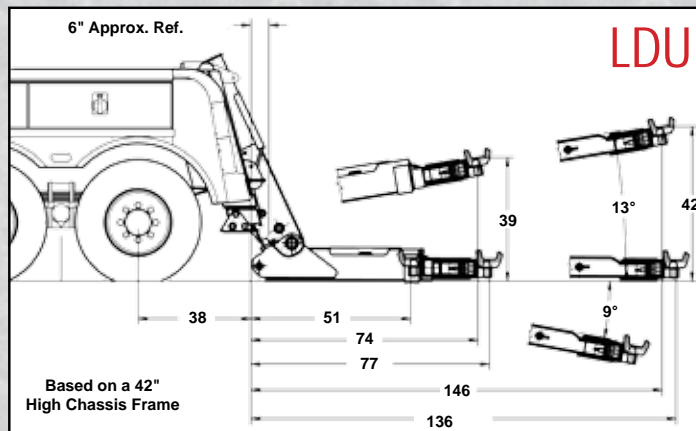
STANDARD BOOM FEATURES

- 360° Plus of Boom Rotation
- Proportioning Power Boom Extension with Counter Balance Valve
- Dual Control Stations
- Holding Valves for Boom Elevation & Extension
- Nylatron Boom Slide Pads

- Boom Angle Indicator
- Dual 2-Speed Winches
- Cable Tensioners & Winch Air Free Spool
- Hydraulic Front Outriggers (Over Frame)
- 3-Stage Hydraulic Rear Outriggers with Removable Pads
- Air Activated House Lock, Secures Boom in Rear or Forward Position for Transport
- House Lock Indicator & Window
- Hydraulic Pump
- 360° Sheave Heads
- Hydraulic Pressure Gauge (Driver Side)
- 8 Function Wireless Remote and 9 Function Floor Mounted Switch Panel
- "D" Rings Mounted on 1st & 2nd Stage (1130 & 1140 2-Stage)
- "D" Rings Mounted on 1st & 3rd Stage (1140 3-Stage)

STANDARD UNDERLIFT FEATURES

- Power Elevation & Extension
- Power Tilt & Hydraulic Fold
- 3-Stage Design
- Low Profile 70° Pivoting Crossbar
- 2 Piece Pivot Pin
- Upper/Lower Thrust Washer
- Low Profile Fork Holders



LDU UNDERLIFT SPECIFICATIONS

Fully Retracted - 51".....	35,000 lbs.
Fully Extended - 136".....	15,000 lbs.
Tilt.....	10° +/-
Tow Rating.....	80,000 lbs.

CHASSIS RECOMMENDATION

GVWR.....	54,000 lbs.
Minimum C.B.	156" or 180"
Maximum Cab to Axle (Clear).....	228"
Maximum Frame Height.....	42"
After Frame from Center of Rear Axle.....	40"
R.B.M.	3,000,000 (in./lbs.)

All ratings are based on structural factors only, not vehicle capacities or capabilities. Specifications shown are approximations and may vary depending on chassis selected. Miller Industries Towing Equipment Inc. reserves the right to change or modify product and or specifications without notice or obligation. Some equipment shown is optional.

OPTIONAL EQUIPMENT

- 212" Two-Stage Under-frame "H-Beam" Front Outriggers
- 262" Three-Stage Under-frame "H-Beam" Front Outriggers*
- 212" RXP Front Outriggers
- Additional Lift Forks & Attachments
- Front Outrigger Side Pull Attachment
- 4-Stage Rear Outriggers*
- Dual 15K Turret Mounted Winches* (N/A on 1140s with RXP Option)
- 25K Belly Drag Winch (1130 Only)
- 35K Belly Drag Winch* (N/A on 1140s with Turret Mounted Winches)
- Solid State Power Distribution System with Wireless Controls and Front & Rear Multi-Function Switch Panels
- LDU Lowrider Underlift
- SDU-4 Underlift*
- SDU-4 Lowrider Underlift*
- Rear Air & Electrical Hook-ups

- Side Mounted "D" Rings (Over-frame outriggers only)
- 2nd Stage Mounted "D"-Rings (1140 3-Stage)
- Cam-lock for "D" Ring Hold-Back
- Radio Proportional Illuminated Controls
- Radio Proportional Illuminated Controls with Dual Manual Controls
- Air Shift PTO
- Manual Override Control for PTO
- Engine Data Information Center
- Tailboard Underlift Controls
- 24", 30", 36", or 48" Tunnel Box
- Chain Rack for 48" Tunnel Box
- Shelf Kit for 36" & 48" Tunnel Boxes
- Chain & Strap Packages
- Aluminum Tubular Pylon
- Additional Tailboard "D"-Rings
- Tailboard Cable Tiebacks
- Rear Camera & Monitor
- Navigation System
- Xenon Boom Lights
- Halogen Work & Hook-Up Lighting
- Additional Lighting

*Only available on the 1140



©2010 Miller Industries Towing Equipment Inc. All Rights Reserved.

CENTURY®

8503 Hilltop Drive • Ooltewah, TN 37363

800-292-0330 • 423-238-4171

FAX 423-238-5371 • www.MILLERIND.com

DISTRIBUTED BY: