



10 & 15 Series Carriers



SP 8000 and other Optional Equipment Shown.

Enduring Value for Your Demanding Business

Vulcan 10 & 15 Series carriers are packed with practical features to provide safe and easy hauling of a variety of loads with the same quality you have come to expect out of all Vulcan products. Vulcan 10 & 15 Series carriers are available in several deck lengths and a variety of options that allow you to customize your carrier to your specific needs. For more information on the carriers that stand up to your tough demands, contact your local Vulcan Distributor.

***Innovative. Durable.
Brutally Tough.***

For quick and easy access when hooking up to a second vehicle, theft proof storage for the standard slide in L-Arms is provided in the tailboard along with large safety chain pockets and a tow light socket. Other features include an adjustable rear stabilizer and LED body lighting.



The low profile fabricated wheel-lift stinger provides 68" of reach. When retracted the crossbar is tucked in close to tailboard with minimal overhang. Vulcan's Strapless Wheel Retainer System or the popular AutoGrip II crossbar is also available.



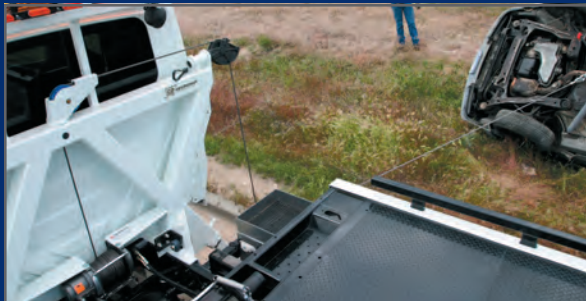
The Vulcan 10 & 15 Series Carriers are available with aluminum decks constructed of interlocking extrusions that provide durability, additional corrosion prevention, and lighter weight for increased payload capacity.



The 10 Series Vulcan provides approximately an 11 to 12 degree load angle on most low profile Class 6 chassis.



- Patented Anti-Tilt Device - Ensures the Bed will not Tilt until it Clears the Bed Locks
- Positive Lock-Down - Secures the Bed to the Chassis Frame for Transport
- Inboard Mounted 3" Lift Cylinders - Allows for the Unrestricted Mounting of Toolboxes
- LED Body Lighting - Longer Light Life and Less Amp Draw
- One Piece Tread Plate - Eliminates Unsightly Weld Seams and the Potential for Damaged Vehicles and Equipment to get Hung up on Welds, Smooth Floor Available at No Charge.



The unique design of the SP 8000 Sidepull allows the operator to use the removable sheave head on either side or winch directly from the center pivoting sheave. The center sheave is able to pivot 180 degrees, allowing you to winch in any direction behind the cab, even straight onto the carrier deck.

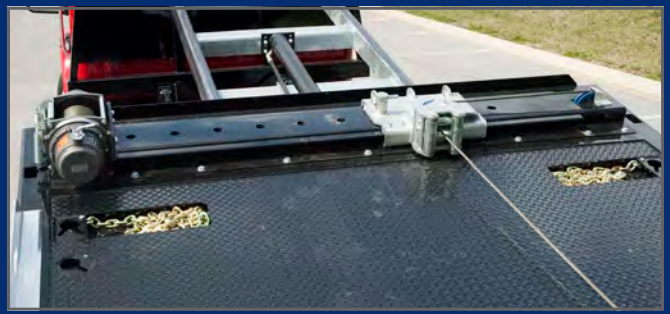


The Extreme Angle option available on Vulcan 10 series steel carriers eliminates the need for wood planks or ramps when loading and unloading low clearance vehicles. The release handle allows the rear hinged deck section to be lowered to a 6° load angle. A removable cable guide is inserted in the deck to keep the cable low while winching the vehicle onto the rear deck.





The Side Mount Winch allows the operator to easily adjust a sliding pulley assembly into nine different positions for a straight line pull when loading vehicles with screw in tow eyes or hooks. The option is available with a 9,000 lb. or 12,000 lb. planetary winch on steel carriers and requires a stationary cab protector or the SP 8,000 Sidepuller option.



- Multiple Fixed and Removable Side Rail Options to Meet your Specific Requirements
- 8" On Center Crossmembers - Gives you a Stronger, more Durable Bed.
- 11-Key Slots on Steel Decks - Allows for Multiple Tie-Down Options when Securing Loads.
- 210" Subframe - Allows for Maximum Overlap for Strength and Stability
- Dual Trays - Separates Electrical Harness from Hydraulic Hoses for Longer Life and Serviceability.



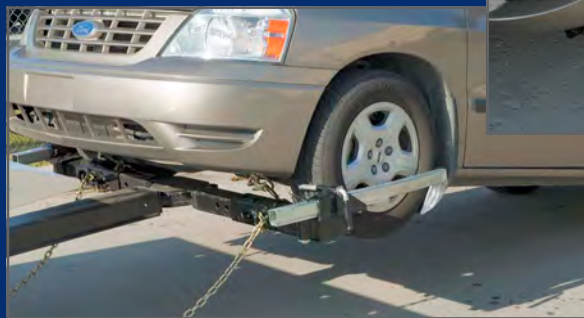
The optional hot dip galvanized subframe assembly, includes the control stations, taillight housings and the wheel lift outer boom, providing additional corrosion prevention from salt and road spray.



The AutoGrip II self-loading wheel lift option operates from the control stations of the carrier by lowering the wheel lift, opening the claws and extending the crossbar until it comes into contact with the towed vehicles tires. The claws are then closed and the vehicle is ready to be lifted.



Vulcan's Strapless Wheel Retainer System is one of the easiest and safest systems on the market today. The retainers pivot both vertically and horizontally for easy hook ups in a variety of situations and best of all, no tie-down straps.



After the vehicle's front wheels are on the carrier, the deck can be leveled out and the cable guide removed allowing the vehicle to overcome the second clearance problem with the forward section of the deck. With the front wheels on the front section of the deck the process can be repeated again to eliminate clearance problems such as low exhaust or extended rear overhang.



STANDARD FEATURES

- Platform Available in Aluminum or Steel
- Floor Level Sides with Stake Pockets (Steel)
- Tri-Hollow Tube Rails (Alum.)
- 210" Full Length Subframe
- Right and Left Chain Trays
- Safety Chains (2-front, 2-rear)
- Painted in Black Acrylic Enamel (Steel Only)
- Left & Right Side Illuminated Controls
- Federal Standard #108 LED Lighting
- 8,000 lb. Hydraulic Winch w/50' Cable
- Full Function Wheel Lift System
- Slide-In L-Arms With Anti-Theft Storage
- Pre-Wired Electrical Junction Box
- Back-Up Lights & Alarm
- Adjustable Rear Stabilizer
- Bed Built 96" Wide
- 11 Key Slot Package (Steel)
- 4 Key Slot Package (Alum.)
- Full Length Slide Pads
- Bed Anti-tilt Lockout
- Positive Lock-down
- Two Lift Cylinders
- One Extension Cylinder
- Winch Clutch Release
- Cable Tensioner
- Cable Roller Guide
- Tow Light Socket
- Mud Flaps
- Hydraulic Pump

OPTIONAL FEATURES

- High Tilt Subframe
- Frame Mounted Headboard (Req. 6" Additional CA)
- Smooth Floor in Lieu of Tread Plate(Steel, N/C)
- Optional Color on Top of Deck and Side Rails (Steel)
- 6" on Center Crossmember Spacing (Steel)
- Solid Tube Side Rails (Steel, N/C)
- Steel Removable Tube Rails*
- Aluminum Removable Blade Rails
- Aluminum Removable Tube Rails *
- Work Lights (Rear, Pylon or Winch Mounted)
- Vulcan's Strapless Wheel Retainer System
- Dock Stabilizer in lieu of Wheel Lift
- Wired or Wireless Winch Remote
- Steel or Aluminum Tool Compartments
- Various Chain & Strap Assemblies
- Optional Planetary Winch
- Many other Popular Vulcan Carrier Options
- Bed Mounted Headboard
- Bed Built 102" Wide
- Galvanized Subframe
- SP 8000 Sidepuller
- Wood Floor*
- Rumber Flooring*
- PTO
- Switch Panel
- Emergency Lighting
- AutoGrip II Wheel Lift
- 8 Key Slot Package (Alum.)
- Additional Key Slots
- Side Mount Winch (Steel)
- Outboard Lift Cylinders* (Required for chassis with mid-ship fuel tanks)

*N/A on the Extreme Angle

CAB TO AXLE (C.A.) REQUIREMENTS

SP 8000 Sidepuller	Add 12"
Frame Mounted Headboard	Add 6"
19'	120"
19' 6"	127"
21'	144"
22'	156"

NOTE: All ratings are based on structural factors only, not vehicle capacities or capabilities. Specifications shown are approximations and may vary depending on chassis selected. Platform rating is based on an equally distributed load. Actual payload carrying capacity is determined by the curb weight of the chassis and equipment and should not exceed the GVWR of the chassis. Miller Industries Towing Equipment Inc. reserves the right to change or modify product and or specifications without notice or obligation. Some equipment shown is optional.

BED SPECIFICATIONS

	10 SERIES	15 SERIES
Load Rating *	10,000 lbs.	15,000 lbs.
Platform Length	19', 19'6", 21', 22'	19', 21', 22'
Platform Thickness	3/16"	3/16"
Platform Width (Outside)	96"	96"
Platform Width (Inside)**	91.5"	91.5"
Steel Crossmembers	2" x 2" on 8" Centers	2.5" x 2.5" on 8" Centers
Alum. Crossmembers	2.25" on 4" Centers	3" on 4" Centers

* Platform rating is based on equally distributed load.

** Inside Bed Widths will vary based on Siderail Option

Winch (1st Layer)	8,000 lb.	8,000 lb.
Cable	3/8" x 50'	3/8" x 50'
Wheel Lift Rating*	3,000 lbs.	3,500 lbs.
Tow Rating at Full Extension**	6,250 lbs.	6,250 lbs.

* 10 Series - 2,000 lbs. for chassis under 19,000 GVWR

** 10 Series - 5,000 lbs. for chassis under 19,000 GVWR

CHASSIS REQUIREMENTS

	10 SERIES	15 SERIES
Minimum GVWR*	15,000 lbs.	25,500 lbs.
Maximum GVWR*	25,500 lbs.	28,000 lbs.
Recommended Tire Size	16" - 19.5"	22.5"
Minimum Frame Height	34"	38"
Maximum Frame Height	39"	42"
Minimum Frame Length Behind Center of Rear Axle	36"	36"

NOTE: The outside frame rails of the chassis extending behind the cab must be free of fuel tanks, air tanks, battery boxes, exhaust stacks, etc.



SP 8000 RATINGS & FEATURES

Boom	8,000 lbs.
Winch	9,000 lbs.
Stiff Leg	8,000 lbs.

- Eight Tie-Back Points
- Multi-Positional Flipper Feet
- 9,000 lb. Planetary Winch
- Winch Tensioner & Free-Spool
- Wire Rope - 3/8" x 100'
- Hydraulic Stiff Legs
- Center Pivoting Boom Head
- Removable Outer Boom Head
- Painted in Flat Black

SP 8000 OPTIONAL FEATURES

- Wired or Wireless Winch Control
- Lightbar Mount

Miller
INDUSTRIES

©2009 Miller Industries Towing Equipment Inc.
All Rights Reserved.

Vulcan

8503 Hilltop Drive • Ooltewah, TN 37363

800-489-2401 • 423-238-7227

FAX 800-960-6667 • www.MILLERIND.com

DISTRIBUTED BY: